



SWITZER & ASSOCIATES

SHAWN RITCHEY, CAI

PRINCIPAL BROKER & AUCTIONEER

Home of
**EVERYBODY'S
REALTORS &
AUCTIONEERS**

Serving your
community since
1959.

**SHAWN RITCHEY
CAI**



Cell
859-588-0261

Switzer & Associates
Shawn Ritchey, CAI
Principal Broker
111 S. Walnut St.
Cynthiana, KY 41031
Office

859-234-2911

859-234-2912

Fax

859-234-6697

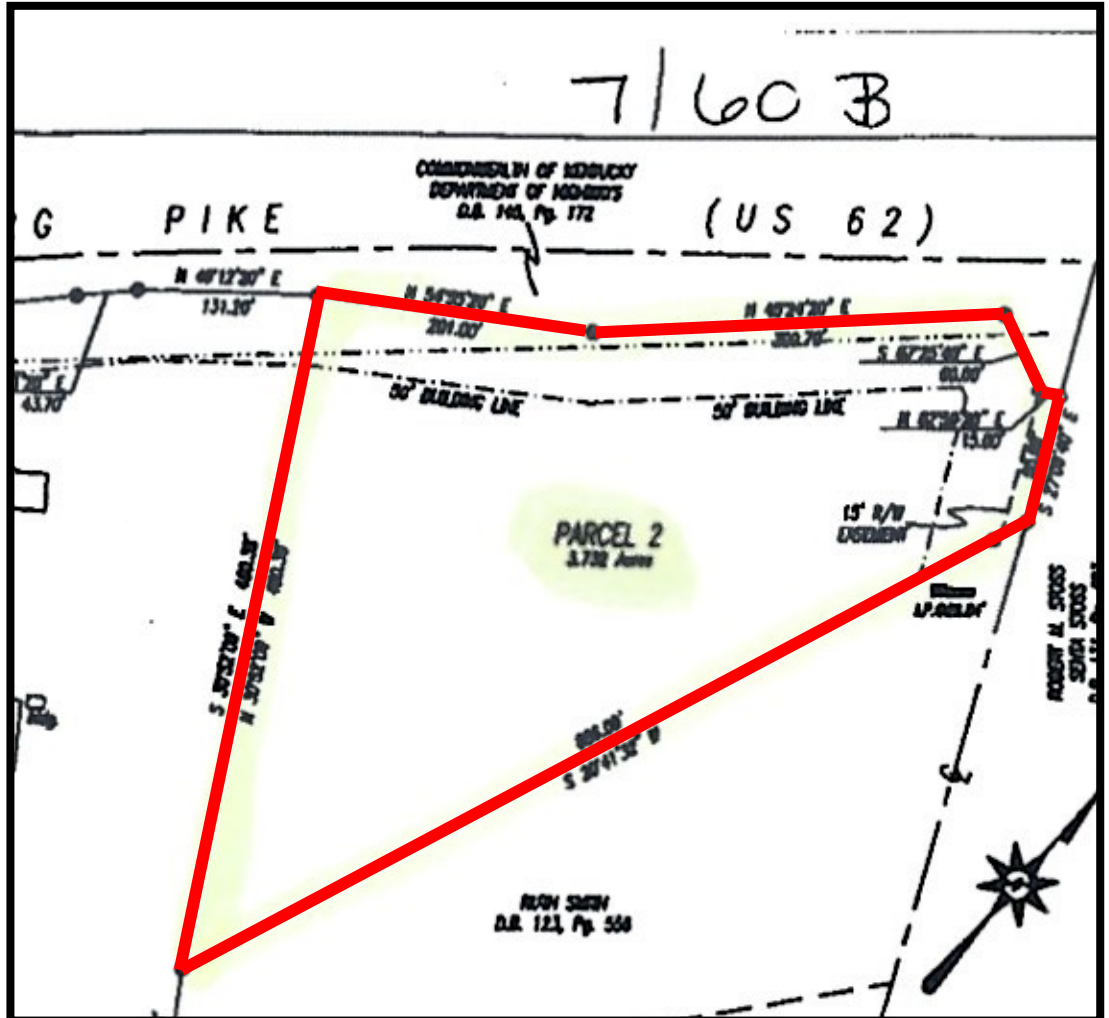
Web-site

www.switzerassoc.com

E-mail

switzer2911@bellsouth.net

US Highway 62 West



3.752± acres

Great location just a over a mile from Cynthiana.
Road frontage on US 62 and Wornall Lane
Harrison Co water and KU electric available

\$75,000

INFORMATION CONTAINED HEREIN IS BELIEVED TO BE ACCURATE BUT NOT WARRANTED