

SWITZER & ASSOCIATES

SHAWN RITCHEY, CAI

PRINCIPAL BROKER & AUCTIONEER

Home of
**EVERYBODY'S
REALTORS &
AUCTIONEERS**

Serving your
community since
1959.

**SHAWN RITCHEY
CAI**



Cell

859-588-0261

Home

859-234-8172

Switzer & Associates

Shawn Ritchey, CAI

Principal Broker

111 S. Walnut St.

Cynthiana, KY 41031

Office

859-234-2911

859-234-2912

Fax

859-234-6697

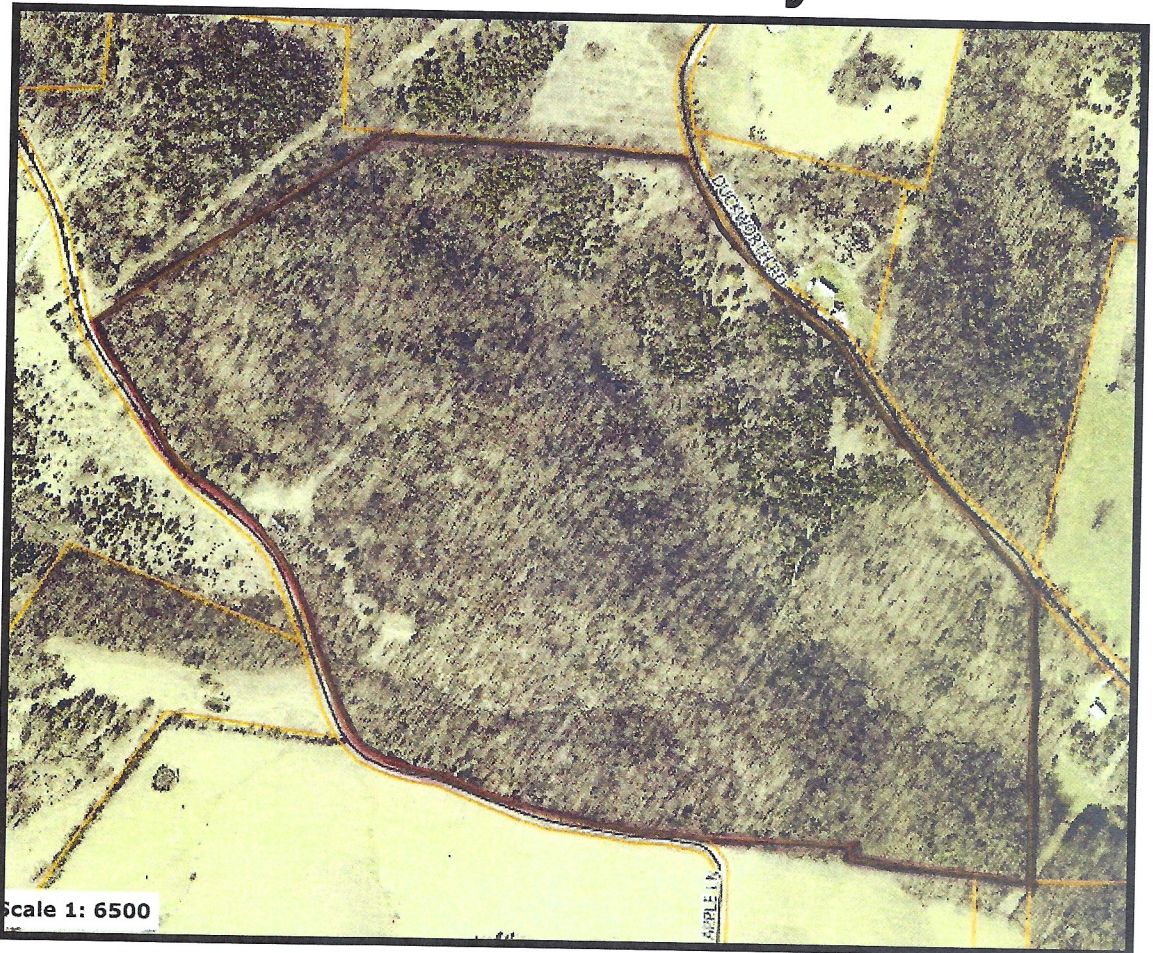
Web-site

www.switzerassoc.com

E-mail

switzer2911@bellsouth.net

Apple Lane & Duckworth Road Harrison County



100.44± acres

Road frontage on both Apple Lane & Duckworth Road
Great building sites! Could be divided into several
tracts.

Mostly wooded acreage excellent hunting!

\$299,000

INFORMATION CONTAINED HEREIN IS BELIEVED TO BE ACCURATE BUT NOT WARRANTED