



SWITZER & ASSOCIATES

SHAWN RITCHEY, CAI

PRINCIPAL BROKER & AUCTIONEER

Home of
**EVERYBODY'S
REALTORS &
AUCTIONEERS**

Serving your
community since
1959.

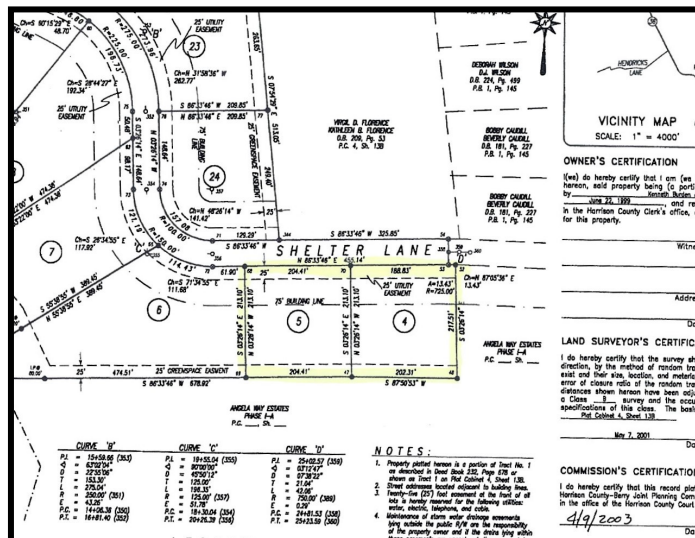
**SHAWN RITCHEY
CAI**



Cell
859-588-0261

Switzer & Associates
Shawn Ritchey, CAI
Principal Broker
111 S. Walnut St.
Cynthiana, KY 41031
Office
859-234-2911
859-234-2912
Fax
859-234-6697
Web-site
www.switzerassoc.com
E-mail
switzer2911@bellsouth.net

Shelter Lane, Cynthiana Ky Lots 4 and 5 Harrison County



- ♦ 2 building lots
- ♦ Approx. 1± acre each selling together
- ♦ Excellent location just off Carl Stevens (Hwy 1743)

\$35,000

INFORMATION CONTAINED HEREIN IS BELIEVED TO BE ACCURATE BUT NOT WARRANTED