



SWITZER & ASSOCIATES

GREG MULBERRY

REALTOR & AUCTIONEER

Home of
**EVERYBODY'S
REALTORS &
AUCTIONEERS**

Serving your
community since
1959.

GREG MULBERRY



Cell
859-533-9655

Switzer & Associates

Shawn Ritchey, CAI

Principal Broker
111 S. Walnut St.
Cynthiana, KY 41031
Office

859-234-2911

859-234-2912

Fax
859-234-6697

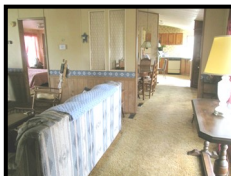
Web-site

www.switzerassoc.com

E-mail

switzer2911@bellsouth.net

1138 Durbintown Road Berry KY



- 1987 Doublewide home
- 3 bedroom
- 2 full baths
- Full unfinished basement
- 1 car garage in basement
- Eat in kitchen with refrigerator, range and dishwasher
- Living room with woodburning stove
- Dining room
- Utility area with washer & dryer

- **39.56± acres**
- Partially fenced
- 4 bent tobacco barn
- East Pendleton water
- Bluegrass energy electric
- Septic
- Fuel oil furnace
- Central air

\$389,900

INFORMATION CONTAINED HEREIN IS BELIEVED TO BE ACCURATE BUT NOT WARRANTED