



# SWITZER & ASSOCIATES

## GREG MULBERRY

### REALTOR & AUCTIONEER

Home of  
**EVERYBODY'S  
REALTORS &  
AUCTIONEERS**

Serving your  
community since  
1959.

**GREG MULBERRY**



Cell

**859-533-9655**

Home

**859-824-6570**

Fax

**859-824-0408**

**Switzer & Associates**

**Shawn Ritchey, CAI**

Principal Broker

111 S. Walnut St.

Cynthiana, KY 41031

Office

**859-234-2911**

**859-234-2912**

Fax

**859-234-6697**

Web-site

[www.switzerassoc.com](http://www.switzerassoc.com)

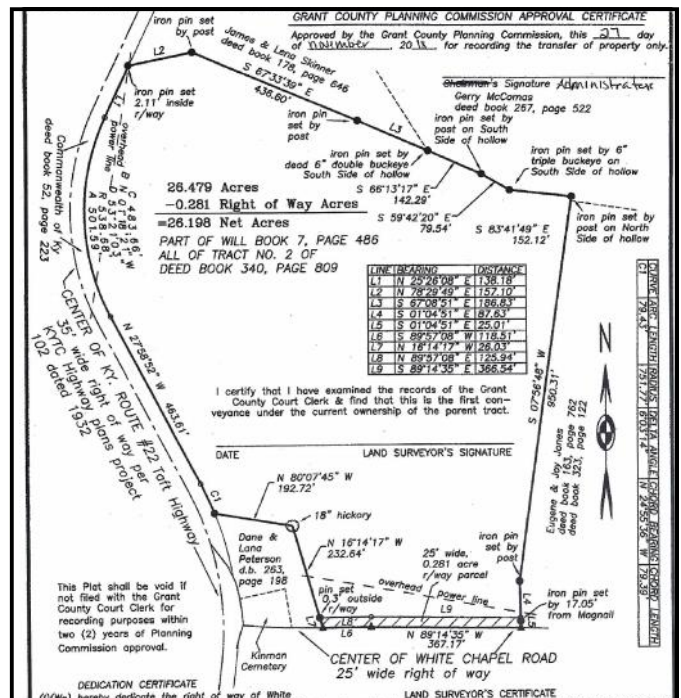
E-mail

[switzer2911@bellsouth.net](mailto:switzer2911@bellsouth.net)



## Taft Hwy & White Chapel Rd Grant County

**26± acres**  
Nice building sites! Mostly cleared. County water available, pond and some woods.  
**\$78,900**



INFORMATION CONTAINED HEREIN IS BELIEVED TO BE ACCURATE BUT NOT WARRANTED