



SWITZER & ASSOCIATES

SHAWN RITCHEY, CAI

PRINCIPAL BROKER & AUCTIONEER

Home of
**EVERYBODY'S
REALTORS &
AUCTIONEERS**

Serving your
community since
1959.

**SHAWN RITCHEY
CAI**



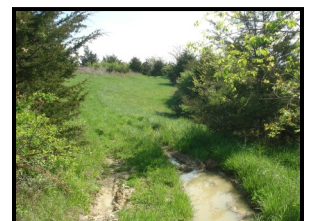
Cell
859-588-0261

Switzer & Associates
Shawn Ritchey, CAI
Principal Broker
111 S. Walnut St.
Cynthiana, KY 41031
Office
859-234-2911
859-234-2912
Fax
859-234-6697
Web-site
www.switzerassoc.com

E-mail
switzer2911@bellsouth.net

64.5± acres

Frontage on Shawhan Rd and Ky Hwy 1032 Berry, KY



64.5± acres. Excellent hunting and recreation farm! Approximately 50% wooded.
There is one pond and a creek/spring on the farm.
Several building sites. Located just off US Hwy 27 in Northern Harrison Co.

\$375,000

INFORMATION CONTAINED HEREIN IS BELIEVED TO BE ACCURATE BUT NOT WARRANTED