



# SWITZER & ASSOCIATES

## SHAWN RITCHEY, CAI

PRINCIPAL BROKER & AUCTIONEER

Home of  
**EVERYBODY'S  
REALTORS &  
AUCTIONEERS**

Serving your  
community since  
1959.

**SHAWN RITCHEY  
CAI**



Cell  
**859-588-0261**

**Switzer & Associates**  
**Shawn Ritchey, CAI**  
Principal Broker  
111 S. Walnut St.  
Cynthiana, KY 41031  
Office  
**859-234-2911**  
**859-234-2912**  
Fax  
**859-234-6697**  
Web-site  
[www.switzerassoc.com](http://www.switzerassoc.com)

E-mail  
[switzer2911@bellsouth.net](mailto:switzer2911@bellsouth.net)

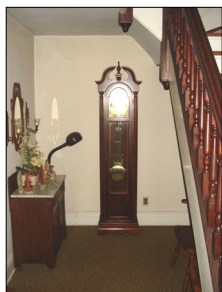
**2620 Headquarters Road**  
Nicholas County



## 64± acres

Excellent baby farm with 765± ft of road frontage on Headquarters Road and 766± ft of road frontage on Beamer Pike

## \$489,000



- ♦ 2 story frame home
- ♦ 4 bedrooms
- ♦ 1 full bath
- ♦ Living Room
- ♦ Dining Room
- ♦ Eat in Kitchen
- ♦ Washer/dryer hookup
- ♦ 4 bent stock barn
- ♦ 5 bent tobacco barn
- ♦ 2 cattle waterers
- ♦ Good woven wire fence
- ♦ Farm could be split by new owner with great building lots available



INFORMATION CONTAINED HEREIN IS BELIEVED TO BE ACCURATE BUT NOT WARRANTED