



SWITZER & ASSOCIATES

SHAWN RITCHEY, CAI

PRINCIPAL BROKER & AUCTIONEER

Home of
**EVERYBODY'S
REALTORS &
AUCTIONEERS**

Serving your
community since
1959.

**SHAWN RITCHEY
CAI**



Cell
859-588-0261

Switzer & Associates

Shawn Ritchey, CAI

Principal Broker
111 S. Walnut St.
Cynthiana, KY 41031
Office

859-234-2911

859-234-2912

Fax

859-234-6697

Web-site

www.switzerassoc.com

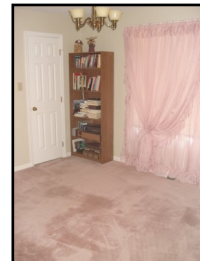
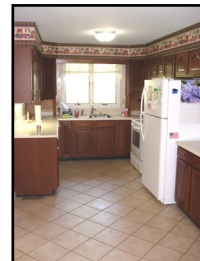
E-mail

switzer2911@bellsouth.net

202 Culpepper Drive



Brick ranch home in Country Club Estates



One level home with approximately 1,996 sq. ft.
of living space per PVA

- Living Room
- Dining Room
- Kitchen with breakfast area
- Enclosed Florida room
- 2 car garage with storage
- Den with fireplace
- 3 bedrooms
- 2½ baths
- Laundry area with closet
- Gas furnace & central air
- Small patio

\$339,000

INFORMATION CONTAINED HEREIN IS BELIEVED TO BE ACCURATE BUT NOT WARRANTED