



SWITZER & ASSOCIATES

SHAWN RITCHEY, CAI

PRINCIPAL BROKER & AUCTIONEER

Home of
**EVERYBODY'S
REALTORS &
AUCTIONEERS**

Serving your
community since
1959.

**SHAWN RITCHEY
CAI**



Cell

859-588-0261

Home

859-234-8172

Switzer & Associates

Shawn Ritchey, CAI

Principal Broker

111 S. Walnut St.

Cynthiana, KY 41031

Office

859-234-2911

859-234-2912

Fax

859-234-6697

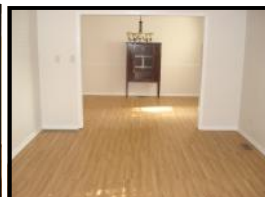
Web-site

www.switzerassoc.com

E-mail

switzer2911@bellsouth.net

838 Burton Pike, Georgetown KY



- 6± acres
- 2,000± sq. ft. brick home
- 3 bedrooms
- 2½ baths
- Living Room
- Family Room
- Dining Room with wood burning insert fireplace
- Eat in kitchen with range, refrigerator, dishwasher & microwave
- 2 car attached garage
- Central heat & air
- Blacktop driveway
- 2 separate tracts selling together
- 5 bent barn with stalls, electric and water
- 512± sq. ft. cottage (currently rented)
- Bring your horses!

\$294,900

INFORMATION CONTAINED HEREIN IS BELIEVED TO BE ACCURATE BUT NOT WARRANTED